



# Flight Plan & Site Survey

Created using **RPAS Wilco®**

Reference No:	673144
Title:	West Kootenay - Poupore Flats
Pilot Name:	
Pilot Certificate:	
Flight Start:	February 11, 2025 5:21 PM
Flight End:	February 11, 2025 7:21 PM
Flight Area (Latitude):	49° 13' 17.80" N ( 49.222 )
Flight Area (Longitude):	117° 40' 9.50" W ( -117.669 )
Altitude - Radius:	<b>Alt:</b> 400 ft - <b>Rad:</b> 926.0 m ( 0.5 nm)
Classification:	CONTROLLED
FIR - Contact:	CZVR - 604-586-4500

## Notes:

Your flight is in controlled airspace.

If your RPAS is > 250g, please obtain RPAS Flight Authorization using the NavDrone app or by contacting NavCanada. (CARs 901.71)

Please ensure you received all required authorizations prior to flight.

## Disclaimer

This Site Survey was created using RPAS Wilco by AIM Robotics. The flight plan contained is intended only for RPAS flights on the date/time and location specified. The user accepts all responsibility for the accuracy and completeness of the information contained.

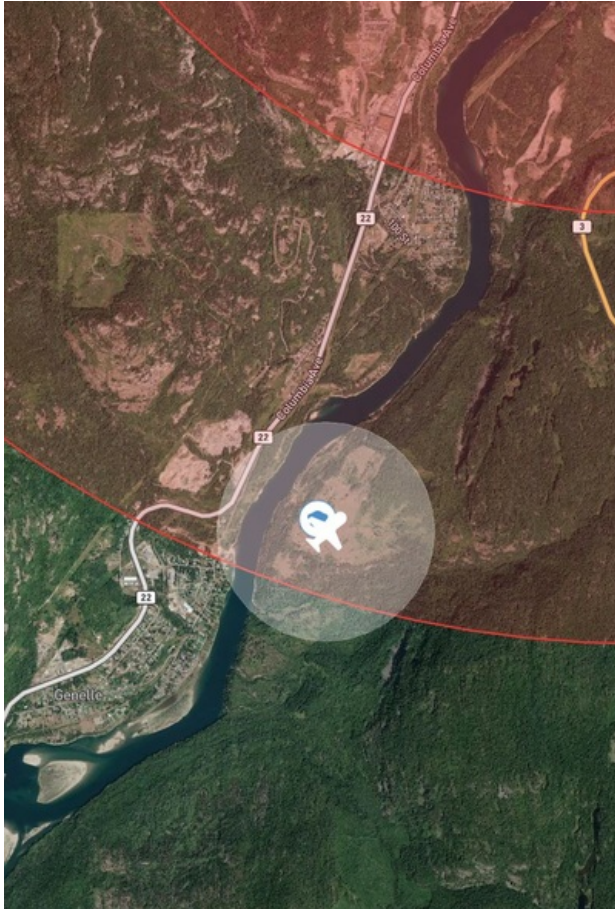
For the complete Terms & Conditions, see

<https://rpaswilco.com/#/tnc>

## Included

- Site Survey
- Obstacles (if available)
- Nearby Aerodromes
- Canadian Aviation Regulations
- GFA
- Aerodrome Supplements
  - METAR & TAF (if available)
  - NOTAMs
  - CFS



## Flight Map



## RPAS Specification

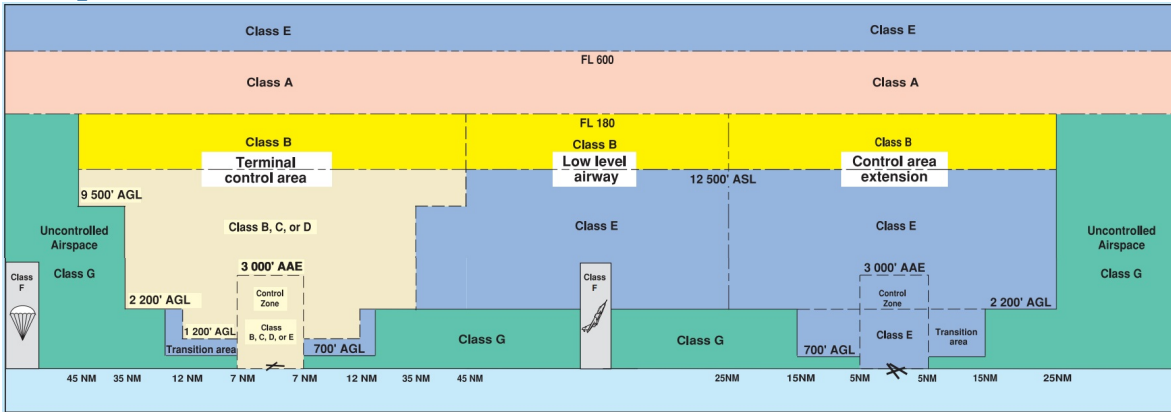
- **Manufacturer:**  
MAAC
- **Model:**  
MODELAIRPLANE
- **Registration Number:**
- **Eligible for advanced operations:**  
No
- **Manufacturer RPAS safety assurance:**
  - **Controlled Airspace:** N/A
  - **Near People:** N/A
  - **Over People:** N/A

## MAP Details

		Latitude	Longitude
	<b>MODEL</b>	49° 13' 17.80" N ( 49.222 )	117° 40' 9.50" W ( -117.669 )
	<b>Pilot</b>	49° 13' 21.40" N ( 49.2226 )	117° 40' 13.10" W ( -117.6703 )



## Airspace Classification



## Overlying Airspaces

Class	Name	Floor	Ceiling
E	Castlegar CZ	SFC	6500MSL
E	Castlegar, BC TA	700AGL	12500MSL
B	Castlegar, BC TA	12500MSL	18000MSL
E	Castlegar, BC CAE	2200AGL	12500MSL
B	Castlegar, BC CAE	12500MSL	18000MSL
E	Williams Lake, BC CAE	12500MSL	12500MSL
B	Williams Lake, BC CAE	12500MSL	18000MSL

## Nearest Aerodromes & Distance from Operation

WEST KOOTENAY REGIONAL (CYCG - AERODROME/HELIPORT - Cert)	Lat: 49.296	Long: -117.632	8.703KM	4.7NM	N
TRAIL (KOOTENAY BOUNDARY REGIONAL HOSPITAL (CKB3 - HELIPORT - Cert)	Lat: 49.104	Long: -117.7	13.267KM	7.16NM	S
TRAIL (CAD4 - AERODROME - Cert)	Lat: 49.06	Long: -117.608	18.515KM	10.0NM	S
CASTLEGAR (TARRYS CONVENTION CENTRE) (CCT3 - HELIPORT - Reg)	Lat: 49.386	Long: -117.552	20.161KM	10.89NM	NE
NELSON (CZNL - AERODROME - Reg)	Lat: 49.494	Long: -117.301	40.36KM	21.79NM	NE



BRITISH COLUMBIA

AERODROME/FACILITY DIRECTORY

CASTLEGAR / WEST KOOTENAY REGIONAL BC

CYCG

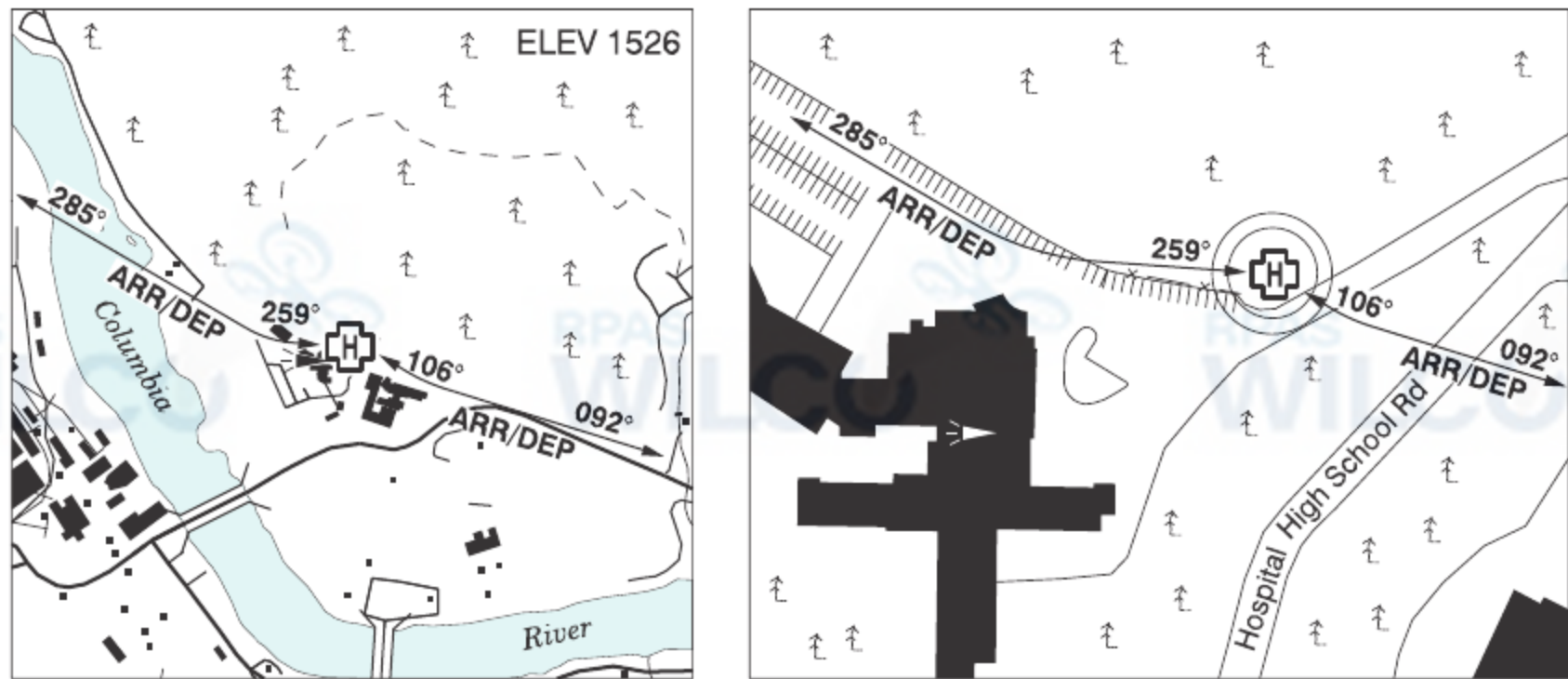
REF	N49 17 46 W117 37 57 2SSE 15°E (2016) UTC-8(7) Elev 1626' A5005 LO2 HI3 CAP	
OPR	City 250-365-7227 Cert day only	
PF	A-1,2,3,6 C-4,5	
CUST	AOE/CAN 888-226-7277	
FLT PLN	<div>FIC</div> <div>WX</div> <div>Kamloops 866-WXBRIEF (Toll free within Canada) or 866-541-4101 (Toll free within Canada &amp; USA)</div> <div>METAR 14-01Z (DT 13-04Z) O/T LWIS</div> <div>TAF 16-01Z (DT 15-04Z), issue times: 16, 21Z (DT 15, 21Z).</div>	
SERVICES	<div>FUEL</div> <div>OIL</div> <div>S</div> <div>100LL, JA, SP 250-365-5935</div> <div>All</div> <div>1,2,4,5,6 16Z-SS</div>	
RWY DATA	Rwy 15(154°)/33(334°) 5299x150 ASPH	
RWY CERT	Rwy 15/33 AGN IIIA	
TWY	Twy B: Straight section 49' (15.0m) wide. Twy C, D: Pvt.	
APRON	Apron I: Acft movement behind parked Acft is not avb when OPR stands #1 or #2 are in use by a DH8-Q400 or DH8-300.	
RCR	FSS CRFI, PLR/PCN.	
HELI DATA	Parking Pad 49' dia ASPH	
LIGHTING	15-AS(TE ME) P2, 33-SF(4 lead-in lights and offset 11° left) (TE ME) P2 2.9° (offset 5° West). PAPI will not read correctly unless acft positioned on 11° offset apch flt path. PAPI limitation/restriction. PAPI Rwy 15 to be used only within 3NM of thld; PAPI Rwy 33 to be used only within 2NM of thld.	
COMM	<div>RADIO</div> <div>RCO</div> <div>MF/ATF</div> <div>PAL</div> <div>Comm at 10NM may not be possible all quads due to terrain</div> <div>122.1 PTC avbl (V) 1330-0130Z (DT 1230-0430Z) (emerg only 250-365-3013)</div> <div>Pacific rdo 125.85 (FISE)</div> <div>rdo 1330-0130Z (DT 1230-0430Z) O/T tfc 122.1 5NM 6500 ASL (CAR 602.98)</div> <div>Vancouver Ctr 134.2 227.3</div>	
PRO	<b>AIRPORT RESTRICTION:</b> Pursuant to CAR 602.96 (3) (d) aprt use rstd to daylight hrs only exc for emergencies. Rgt hand circuits Rwy 15 (CAR 602.96). When arriving via Kootenay River route, proceed to GOLF COURSE then join rgt hand circuit Rwy 15/left hand circuit Rwy 33 (CAR 602.96).	
CAUTION	Mtns sur the aprt & protrude into tkof/apch areas of both rwys. P-line 40 AGL crosses apch to Rwy 33 aprx 1500' fr thld. Acft on inst apchs may use high rates of descent (see hatched area on VTPC). Hi terrain reduces operational lengths of Rwys 15 and 33 PAPI.	

BRITISH COLUMBIA

AERODROME/FACILITY DIRECTORY

TRAIL (KOOTENAY BOUNDARY REGIONAL HOSPITAL) BC (Heli)

CKB3



REF	N49 06 13 W117 42 01 Adj N 15° (2018) UTC-8(7) Elev 1526' A5005
OPR	Interior Health Authority 250-368-3311 or 250-512-7174 Cert PPR
PF	A-1,4 C-5 D-2,3,6
FLT PLN	
FIC	Kamloops 866-WXBRIEF (Toll free within Canada) or 866-541-4101 (Toll free within Canada & USA)
HELI DATA	FATO 86' dia TLOF 58' dia CONC Safety Area 115' dia, elevated pad Max heli overall length 57.4' (CAR 602.96)
RCR	Opr Day only
COMM	
ATF	tfc 123.2 5NM 4400 ASL
PRO	Arr/dep 106° to 092° and 259° to 285° curved fr heli, slope 16% (H2) day only.
CAUTION	Lgtd stack W of hosp. Lgtd wi on hosp. Large unmarked rock outcropping on uphill side aprx 150' fr pad on 259° mag (274° true).

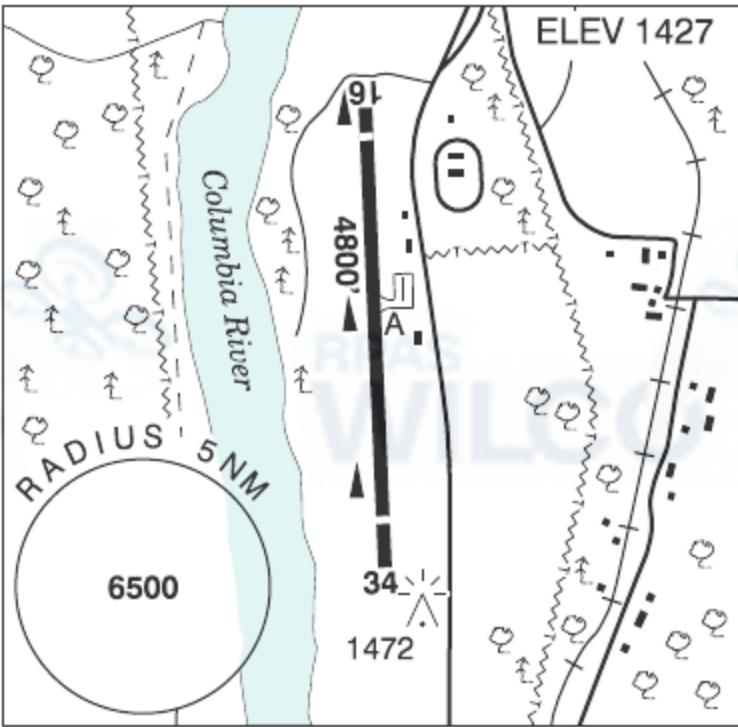


BRITISH COLUMBIA

AERODROME/FACILITY DIRECTORY

TRAIL BC

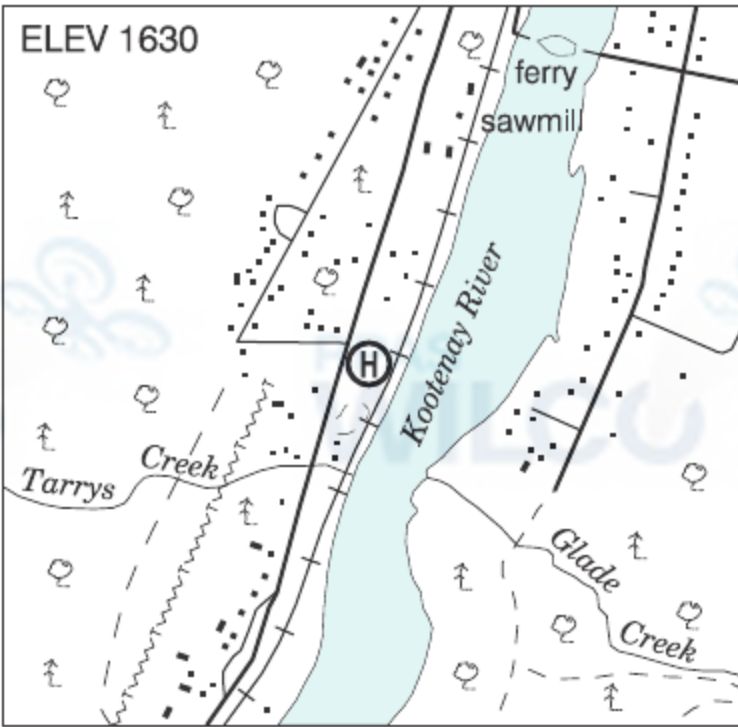
CAD4

REF	N49 03 36 W117 36 29 6.1SE 16°E (2013) UTC-8(7) Elev 1427' A5005 LO2 CAP	
OPR	City of Trail 250-364-1262 Cert	
PF	B-1,7 C-2,3,4,5,6	
CUST	AOE/15 2-48 hrs PN 1-888-226-7277 16-24Z± Mon-Fri exc hols; AOE/CAN	
FLT PLN	<div>FIC</div> <div>WX</div> <div>Kamloops 866-WXBRIEF (Toll free within Canada) or 866-541-4101 (Toll free within Canada &amp; USA) AUTO H24 (see COMM) Webcam</div>	
SERVICES	250-367-0029 or 250-921-5478	
FUEL	100LL, JA-1	
RWY DATA	Rwy 16(162°)/34(342°) 4800x75 ASPH Rwy 16 down 0.51% Thld 16 displ 301' Thld 34 displ 497'	
RWY CERT	Rwy 16/34 AGN II	
RCR	Opr Win maint 16-00Z± O/T 3 hrs PN CRFI 250-367-0029 or 250-921-5478	
COMM	<div>MF</div> <div>AUTO</div> <div>tfc 123.2 5NM 4400 ASL (CAR 602.98) 122.175</div>	
PRO	Rgt hand circuits Rwy 16 (CAR 602.96)	
CAUTION	Narrow valley. Final apch Rwy 16 offset 20°- axis 139° mag due terrain. Twr 68 AGL aprx 1400' SSE of Thld 34.	

BRITISH COLUMBIA

AERODROME/FACILITY DIRECTORY

CASTLEGAR (TARRYS CONVENTION CENTRE) BC (Heli)CCT3

REF	N49 23 11 W117 33 07 6NNE 16°E (2013) UTC-8(7) Elev 1630’ A5005	
OPR	Tarrys Convention Centre 250-505-3905 Reg PPR	
PF	A-1, C-2,3,4,5,6	
FLT PLN FIC	Kamloops 866-WXBRIEF (Toll free within Canada) or 866-541-4101 (Toll free within Canada & USA)	
SERVICES FUELS	Jet A (Barrels) 1,4,5,6	
HELI DATA RCR	FATO/TLOF 100’ x 100’ GRASS Opr	
COMM RCO ATF	Pacific rdo 125.85 (FISE) Castlegar rdo 122.1 1NM 2700 ASL	
PRO	Apch fr river.	
CAUTION	Wires crossing river one mile E of glade ferry. Castlegar CZ bdry aprx 1.2NM SW.	

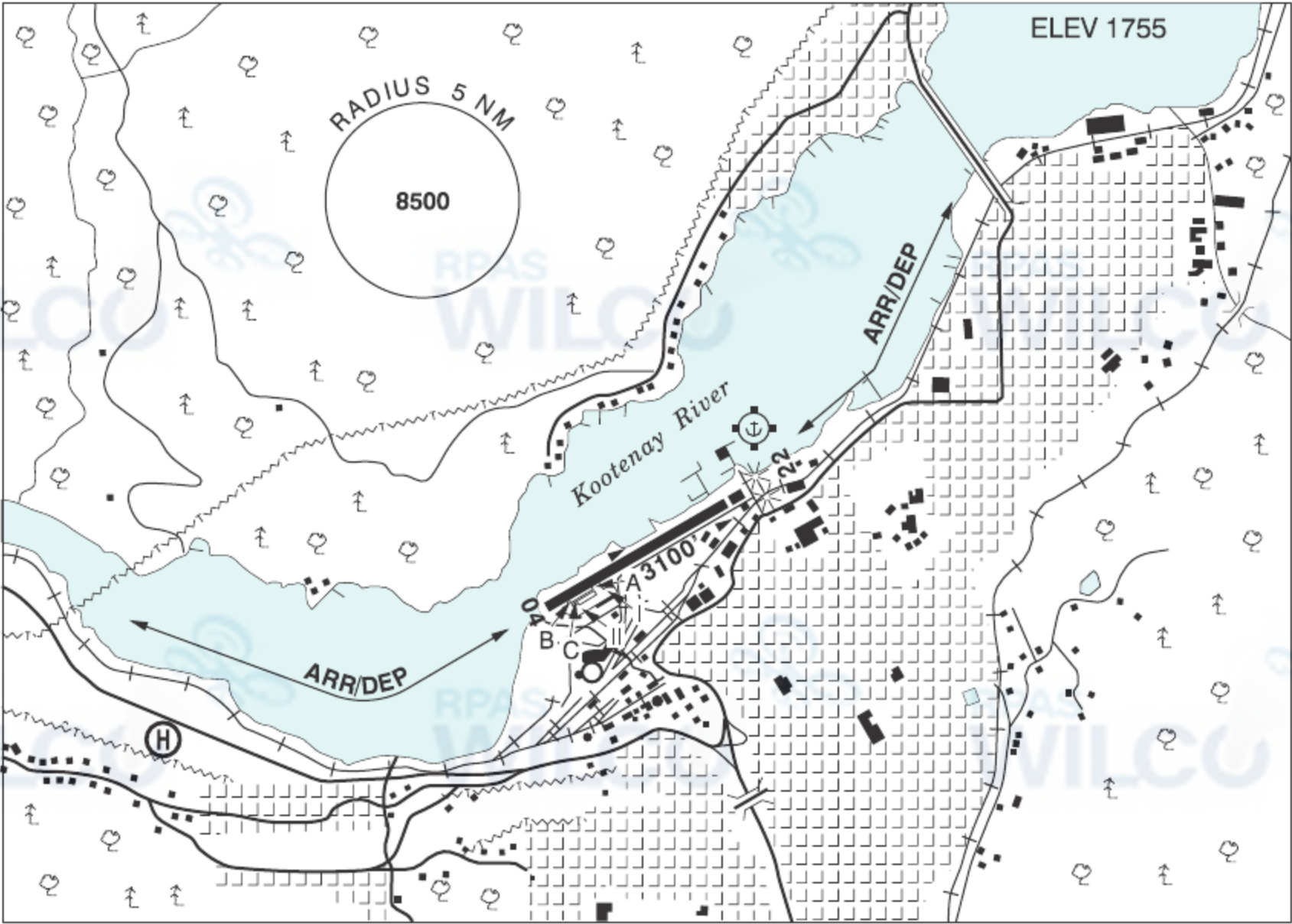


BRITISH COLUMBIA

AERODROME/FACILITY DIRECTORY

NELSON BC

CZNL



REF	N49 29 39 W117 18 02 16°E (2012) UTC-8(7) Elev 1755' A5005 LO2
OPR	City 250-352-8228 Reg
PF	A-1 C-2,3,4,5
FLT PLN	Kamloops 866-WXBRIEF (Toll free within Canada) or 866-541-4101 (Toll free within Canada & USA)
FIC	
SERVICES	100LL City of Nelson 250-352-8228; JB High Terrain Helicopters, 250-354-8445, JA Kootenay Valley Helicopters Ltd. 250-505-2150
FUEL	
RWY DATA	Rwy 04(040°)/22(220°) 3100x75 ASPH Thld 22 displ 200'.
APRON	Apron I & II: Prkg avbl for transient fixed-wing acft.
RCR	Opr Ltd win maint. PLR
COMM	Pacific rdo 123.475 (FISE) 126.7 (bcst) tfc 123.2 4NM 3300 ASL
RCO	
ATF	
PRO	Rgt hand circuits Rwy 22 (CAR 602.96). PPR Heli tng flts by opr.
CAUTION	Narrow mountainous valley. Arr/dep paths are offset as indicated on A/D sketch. Arr/dep path W Thld 04 overflies heli adj SW A/D. Poles to 20 AGL aprx 450' NE & in apch area of Rwy 22. Watch for wildlife on the rwy. Hang gliding and paragliding activities at field, year round.



# Canadian Aviation Regulations

## Division III — General Operating and Flight Rules

For full listing please visit : <https://laws-lois.justice.gc.ca/eng/regulations/SOR-96-433/FullText.html#s-901.27>

### Visual Line-of-sight

- **901.11 (1)** Subject to subsection (2), no pilot shall operate a remotely piloted aircraft system unless the pilot or a visual observer has the aircraft in visual line-of-sight at all times during flight.
- **(2)** A pilot may operate a remotely piloted aircraft system without the pilot or a visual observer having the aircraft in visual line-of-sight if the operation is conducted in accordance with a special flight operations certificate — RPAS issued under section 903.03.

### Procedures

- **901.23 (1)** No pilot shall operate a remotely piloted aircraft system unless the following procedures are established:
  - **(a)** normal operating procedures, including pre-flight, take-off, launch, approach, landing and recovery procedures; and
  - **(b)** emergency procedures, including with respect to
    - **(i)** a control station failure,
    - **(ii)** an equipment failure,
    - **(iii)** a failure of the remotely piloted aircraft,
    - **(iv)** a loss of the command and control link,
    - **(v)** a fly-away, and
    - **(vi)** flight termination.
- **(2)** If the manufacturer of the remotely piloted aircraft system provides instructions with respect to the topics referred to in paragraphs (1)(a) and (b), the procedures established under subsection (1) shall reflect those instructions.
- **(3)** No pilot shall conduct the take-off or launch of a remotely piloted aircraft unless the procedures referred to in subsection (1) are reviewed before the flight by, and are immediately available to, each crew member.
- **(4)** No pilot shall operate a remotely piloted aircraft system unless the operation is conducted in accordance with the procedures referred to in subsection (1).

### Site Survey

**901.27** No pilot shall operate a remotely piloted aircraft system unless, before commencing operations, they determine that the site for take-off, launch, landing or recovery is suitable for the proposed operation by conducting a site survey that takes into account the following factors:

- **(a)** the boundaries of the area of operation;
- **(b)** the type of airspace and the applicable regulatory requirements;
- **(c)** the altitudes and routes to be used on the approach to and departure from the area of operation;
- **(d)** the proximity of manned aircraft operations;
- **(e)** the proximity of aerodromes, airports and heliports;
- **(f)** the location and height of obstacles, including wires, masts, buildings, cell phone towers and wind turbines;
- **(g)** the predominant weather and environmental conditions for the area of operation; and
- **(h)** the horizontal distances from persons not involved in the operation.

### Operations at or in the Vicinity of an Aerodrome, Airport or Heliport

- **901.47 (1)** No pilot shall operate a remotely piloted aircraft at or near an aerodrome that is listed in the *Canada Flight Supplement* or the *Water Aerodrome Supplement* in a manner that could interfere with an aircraft operating in the established traffic pattern.
- **(2)** Subject to section 901.73, no pilot shall operate a remotely piloted aircraft at a distance of less than
  - **(a)** three nautical miles from the centre of an airport; and
  - **(b)** one nautical mile from the centre of a heliport.
- **(3)** No pilot shall operate a remotely piloted aircraft at a distance of less than three nautical miles from the centre of an aerodrome operated under the authority of the Minister of National Defence unless the operation is conducted in accordance with a special flight operations certificate — RPAS issued under section 903.03.

### Records

- **901.48 (1)** Every owner of a remotely piloted aircraft system shall keep the following records:
  - **(a)** a record containing the names of the pilots and other crew members who are involved in each flight and, in respect of the system, the time of each flight or series of flights; and
  - **(b)** a record containing the particulars of any mandatory action and any other maintenance action, modification or repair performed on the system, including
    - **(i)** the names of the persons who performed them,
    - **(ii)** the dates they were undertaken,
    - **(iii)** in the case of a modification, the manufacturer, model and a description of the part or equipment installed to modify the system, and
    - **(iv)** if applicable, any instructions provided to complete the work.
- **(2)** Every owner of a remotely piloted aircraft system shall ensure that the records referred to in subsection (1) are made available to the Minister on request and are retained for a period of
  - **(a)** in the case of the records referred to in paragraph (1)(a), 12 months after the day on which they are created; and
  - **(b)** in the case of the records referred to in paragraph (1)(b), 24 months after the day on which they are created.
- **(3)** Every owner of a remotely piloted aircraft system who transfers ownership of the system to another person shall, at the time of transfer, also deliver to that person all of the records referred to in paragraph (1)(b).